



FLEXFIT[®]

2023 CATALOG

M I D D L E E A S T

SECTION CONTENTS

| | PG. | | |
|-------------------------|-----|------------------------|----|
| ABOUT US | 3 | YP CLASSICS® JOCKEY | 32 |
| TECHNOLOGIES | 4 | 7005 | |
| SIZE CHART | 5 | YP CLASSICS® SNAPBACK | 35 |
| FLEXFIT DELTA® | 13 | 6089M | |
| 180A | | 6789M | |
| 180A CARBON | | 6089CA | |
| MULTICAM® | 16 | 5089M | |
| 6277MC | | YP CLASSICS® TRUCKER | 42 |
| 6089MC | | 6606 | |
| 6608MC | | 6606T | |
| FLEXFIT® CAP | 18 | 6606W | |
| 6277 | | 6606R | |
| 6511 | | 6506 | |
| FLEXFIT® PERFORMANCE | 22 | 6006 | |
| 6577CD | | 6006T | |
| FLEXFIT® BUCKET HAT | 24 | 6006W | |
| 5003 | | YUPOONG® DAD CAP | 54 |
| FLEXFIT 110® | 27 | 6245CM | |
| 110P | | YUPOONG® ADJUSTABLE | 57 |
| 110T <small>NEW</small> | | 6363B | |
| 8110 | | 6363OEM | |
| | | FLEXFIT® DISPLAY STAND | 60 |
| | | CUSTOM OVERSEAS | 61 |
| | | CUSTOM DOMESTIC | 62 |

ABOUT US

Flexfit (EMEI) Europe, Middle East, and India was established in the United Kingdom in 1992 and manages sales, marketing and distribution operations in these regions including Russian federation subcontinent.

We have developed a network of distribution hubs in these regions which represent the core values of our business and products. Internal growth, acquisitions and strategic alliances, has allowed us to build up a powerful network across 4 continents which is managed by a team of professionals.

Flexfit Middle East Division is committed to develop relationships at the highest level of integrity in a professional and responsible manner. Passionate about what we do, inventive and enterprising is in our DNA, we undertake to design bespoke products and services and to carry out those with the utmost transparency, respect for the commitments and compliance. Our commitment to our social responsibility is reflected in the Group's Ethics Charter and contributes to protecting the environment and that foster sustainable development.

Excelsior is our core business philosophy and we are proud to part of this principal guide. We are passionate and enthusiastic about our exquisite unique headwear and have developed innovative services that equally complement the image including unrivalled customer service. We listen with care and commit ourselves to fully understand your business allowing us to develop dynamic partnerships and forward planning strategies.

At Flexfit EMEI we are committed on building an environment with our customers that is team orientated and allow to strengthen through our close collaboration. Our aim is always to grow and we are dedicated to deliver our brand values which inspire us to challenge and lead through creativity.

TECHNOLOGIES



FLEXIBLE VISOR
Super lightweight and designed to be bent in any way and still keep its shape.



ECODRY
Environmentally friendly water repellency without the use of hazardous chemicals.



ULTRAFIBRE
Robust, lightweight and wind/water resistant fibres with a natural shine that emanates strength.



PRO-FORMANCE
Combines Cool & Dry properties with the premium look and feel of wool fabric.



HYBRID TECH
Combining water repellency and Cool & Dry's moisture-wicking for ultimate comfort.



COOL & DRY
Wicks perspiration away from the body, making sure to stay cool, dry and refreshed.



FLEXFIT X-MESH
A revolutionary stretchable mesh that provides ultimate ventilation and comfort.



FLEXFIT TECH
Weaves polyurethane spandex throughout the cap's crown for a secure and flexible fit.



HYPER TECH
Conquers all of the elements: thermal regulation, Cool & Dry, anti-bacterial and UV protection.



PERMACURV
Visor technology that maintains its proper shape and curve at all times.



STAIN BLOCK TECHNOLOGY
This patented technology features a 3 layer multifunctional sweatband that effectively absorbs, stores and diffuses sweat to the undersvisor where it evaporates.



ECOWASH
Clean fabric washing technology with less water, less energy and no chemical usage.



UNIPANEL
Seamless front panel that provides a smooth, uninterrupted canvas for immediate wear or customisation.

SIZING CHART

HEAD SIZE

| | | | | | | | | | | | | | | |
|--------|-----|------|------|------|------|----|------|------|------|------|------|------|----|----|
| INCHES | 20 | 20 ½ | 20 ¾ | 21 ¼ | 21 ½ | 22 | 22 ½ | 23 ¼ | 23 ½ | 23 ¾ | 24 ¼ | 24 ½ | 25 | |
| CM | 51 | 52 | 53 | 54 | 55 | 56 | 57 | 58 | 59 | 60 | 61 | 62 | 63 | 64 |
| SIZES | 6 ¼ | 6 ½ | 6 ¾ | 6 ¾ | 6 ¾ | 7 | 7 ¼ | 7 ¼ | 7 ¼ | 7 ½ | 7 ¾ | 7 ¾ | 8 | |



FLEXFIT DELTA®

| | | | | | | | | | | | | | |
|------|-----|-----|-----|-----|-----|---|-----|-----|-----|-----|-----|-----|---|
| S/M | 6 ¼ | 6 ½ | 6 ¾ | 6 ¾ | 6 ¾ | 7 | 7 ¼ | 7 ¼ | 7 ¼ | 7 ½ | 7 ¾ | 7 ¾ | 8 |
| L/XL | 6 ¼ | 6 ½ | 6 ¾ | 6 ¾ | 6 ¾ | 7 | 7 ¼ | 7 ¼ | 7 ¼ | 7 ½ | 7 ¾ | 7 ¾ | 8 |



FLEXFIT®

| | | | | | | | | | | | | | |
|-------|-----|-----|-----|-----|-----|---|-----|-----|-----|-----|-----|-----|---|
| OSFA | 6 ¼ | 6 ½ | 6 ¾ | 6 ¾ | 6 ¾ | 7 | 7 ¼ | 7 ¼ | 7 ¼ | 7 ½ | 7 ¾ | 7 ¾ | 8 |
| YOUTH | 6 ¼ | 6 ½ | 6 ¾ | 6 ¾ | 6 ¾ | 7 | 7 ¼ | 7 ¼ | 7 ¼ | 7 ½ | 7 ¾ | 7 ¾ | 8 |
| XS | 6 ¼ | 6 ½ | 6 ¾ | 6 ¾ | 6 ¾ | 7 | 7 ¼ | 7 ¼ | 7 ¼ | 7 ½ | 7 ¾ | 7 ¾ | 8 |
| S/M | 6 ¼ | 6 ½ | 6 ¾ | 6 ¾ | 6 ¾ | 7 | 7 ¼ | 7 ¼ | 7 ¼ | 7 ½ | 7 ¾ | 7 ¾ | 8 |
| L/XL | 6 ¼ | 6 ½ | 6 ¾ | 6 ¾ | 6 ¾ | 7 | 7 ¼ | 7 ¼ | 7 ¼ | 7 ½ | 7 ¾ | 7 ¾ | 8 |
| XXL | 6 ¼ | 6 ½ | 6 ¾ | 6 ¾ | 6 ¾ | 7 | 7 ¼ | 7 ¼ | 7 ¼ | 7 ½ | 7 ¾ | 7 ¾ | 8 |



ONE TEN FLEXFIT®

| | | | | | | | | | | | | | |
|------|-----|-----|-----|-----|-----|---|-----|-----|-----|-----|-----|-----|---|
| OSFA | 6 ¼ | 6 ½ | 6 ¾ | 6 ¾ | 6 ¾ | 7 | 7 ¼ | 7 ¼ | 7 ¼ | 7 ½ | 7 ¾ | 7 ¾ | 8 |
|------|-----|-----|-----|-----|-----|---|-----|-----|-----|-----|-----|-----|---|



TWO TEN FITTED®

| | | | | | | | | | | | | | |
|-------|-----|-----|-----|-----|-----|---|-----|-----|-----|-----|-----|-----|---|
| YOUTH | 6 ¼ | 6 ½ | 6 ¾ | 6 ¾ | 6 ¾ | 7 | 7 ¼ | 7 ¼ | 7 ¼ | 7 ½ | 7 ¾ | 7 ¾ | 8 |
| S/M | 6 ¼ | 6 ½ | 6 ¾ | 6 ¾ | 6 ¾ | 7 | 7 ¼ | 7 ¼ | 7 ¼ | 7 ½ | 7 ¾ | 7 ¾ | 8 |
| L/XL | 6 ¼ | 6 ½ | 6 ¾ | 6 ¾ | 6 ¾ | 7 | 7 ¼ | 7 ¼ | 7 ¼ | 7 ½ | 7 ¾ | 7 ¾ | 8 |
| XXL | 6 ¼ | 6 ½ | 6 ¾ | 6 ¾ | 6 ¾ | 7 | 7 ¼ | 7 ¼ | 7 ¼ | 7 ½ | 7 ¾ | 7 ¾ | 8 |



ADJUSTABLE

| | | | | | | | | | | | | | |
|------|-----|-----|-----|-----|-----|---|-----|-----|-----|-----|-----|-----|---|
| OSFA | 6 ¼ | 6 ½ | 6 ¾ | 6 ¾ | 6 ¾ | 7 | 7 ¼ | 7 ¼ | 7 ¼ | 7 ½ | 7 ¾ | 7 ¾ | 8 |
|------|-----|-----|-----|-----|-----|---|-----|-----|-----|-----|-----|-----|---|

*This chart is for general use only. Please refer to each style for most accurate sizing info.

FLEXFIT **DELTA 180**
ENGINEERED CHANGE



INTRODUCTION TO FLEXFIT DELTA

DELTA 180

**THIS IS FLEXFIT DELTA.
THE DIFFERENCE IS
8.26G A 10% WEIGHT
REDUCTION.**

80.10 G  71.84 G



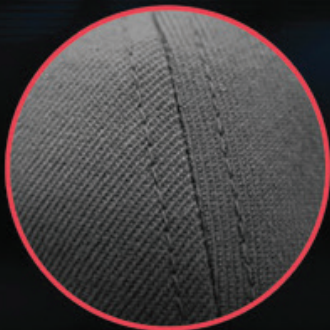
WE HAVE SPENT YEARS AND SLEEPLESS NIGHTS OVER 10%. THE SAME 10% THAT DROVE US TO MAKE A BETTER CAP.

* +/- 3% (CONFIDENCE INTERVAL OF 95%)

DELTA 180

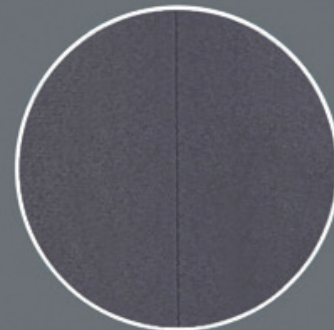
TYPICAL CAP

- HEAVY STITCHING
- CONVENTIONAL
- UNSIGHTLY



SEAMLESS FLEXFIT DELTA

- SEW-FREE FINISH ON ALL PANELS
- LASER CUT OR SEWN EYELETS
- HIGH-TECH, MINIMAL AND LIGHT
- WATER RESISTANT



POLYESTER/PERFORMANCE FABRIC ONLY

DELTA 180

FLEXFIT BOND TAPE

- SEAM SEALED
- LIGHTWEIGHT
- REDUCED STITCHING
- ODOR REPELLENT
- THERMAL REGULATION
- ANTI-BACTERIAL
- COLORS: BLACK & WHITE

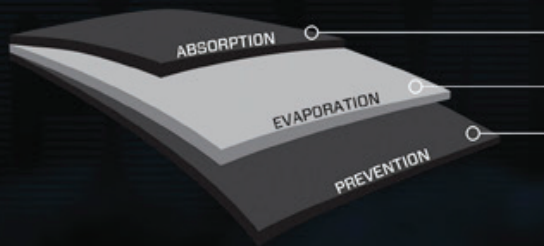


FLEXFIT BOND TAPING

DELTA 180

SWEATBAND CONSTRUCTION

3 LAYER, HIGH-TECH CONSTRUCTION



LAYER 1: FAST SWEAT ABSORPTION

LAYER 2: QUICK DRY + COMFORT CUSHION

LAYER 3: COATED KNIT TO PREVENT STAINING ON THE CAP CROWN



NEW R&D SWEATBAND - SILITAN (LIGHTWEIGHT) PRINT - NO WOVEN LABEL
COLORS: BLACK OR WHITE

DELTA 180

UNDERSVISOR CONSTRUCTION

COOL & DRY
MOISTURE WICKING + QUICK DRYING
HIGHLY STAIN RESISTANT AGAINST SWEAT

PATENT PENDING STAIN BLOCK
TECH DIFFUSES SWEAT
THROUGH THE UNDERSVISOR
PREVENTING SWEAT STAINS
ON THE CAP'S CROWN.



COOL & DRY - MOISTURE WICKING + QUICK DRYING - HIGHLY STAIN RESISTANT AGAINST SWEAT



180A

FLEXFIT DELTA® ADJUSTABLE



COMPOSITION: 92% Polyester
8% Spandex

SIZES: OSFA
YOUTH ONLY AVAILABLE COLORS MARKED*

| PROFILE | VISOR | CROWN | PANELS |
|---------|------------|--------|--------|
| Mid | Permacurv® | 3 1/2" | 6 |

180A FLEXFIT DELTA® ADJUSTABLE

Flexfit Delta® is a revolutionary cap that is lighter, sleeker, smarter and more comfortable choice.



SILVER



NAVY



BLACK*



WHITE*



BRICK RED



PRINCE BLUE*



LIGHT PURPLE



PASTLE LAVENDER*



ITALIAN STRAW



BUCK





COMPOSITION: 100% Polyester
SIZES: OSFA

| PROFILE | VISOR | CROWN | PANELS |
|---------|------------|--------|--------|
| Mid | Permacurv® | 3 1/2" | 6 |



MELANGE BLUE



MELANGE NAVY

180A CARBON FLEXFIT DELTA® CARBON

Flexfit Delta® Carbon combines carbon fiber-like grid for stretchability and durability while featuring the same revolutionary no-seam construction and stain-block technology.

FLEXFIT
EUROPE - MIDDLE EAST - INDIA

FLEXFIT DELTA CARBON



MULTICAM®

MULTICAM®

MULTICAM® was developed to effectively limit the visual and near-ir signature of a person operating across a very wide range of physical environments and seasons. After many successful evaluations, after being proven in combat, and after becoming the officially issued pattern of the U.S. Army for all Afghanistan operations in 2010, MULTICAM® is the proven multi-environment concealment.



6277MC
THE ONE AND ONLY
ORIGINAL FLEXFIT®
IN MULTICAM®

Official licensed MULTICAM® pattern. Pattern is the proven multienvironment concealment solution. Hard buckram. Black undervisor. 8 rows of stitching on visor.

MULTICAM.

CONTENTS
 98% Cotton,
 2% P.U. Spandex
SIZE
 S/M 6 3/4" - 7 1/4"
PROFILE
 Mid
VISOR
 Permacur®
CROWN
 3 1/2"
PANELS
 6



6089MC
YUPOONG®
CLASSIC SNAPBACK
MULTICAM®

Official licensed MULTICAM® pattern. Pattern is the proven multienvironment concealment solution. Matching plastic snap. Hard buckram. Black undervisor.

MULTICAM.

CONTENTS
 98% Cotton,
 2% P.U. Spandex
SIZE
 OSFA
PROFILE
 High
VISOR
 Flat
CROWN
 3 3/4"
PANELS
 6



6606MC
YUPOONG®
RETRO TRUCKER
MULTICAM®

Official licensed MULTICAM® pattern. Pattern is the proven multienvironment concealment solution. Trucker mesh back. Matching plastic snap. Hard buckram. Black undervisor.

MULTICAM.

CONTENTS
 71% Cotton
 28% Nylon
 1% Polyurethane
SIZE
 OSFA
PROFILE
 Mid
VISOR
 Permacur®
CROWN
 3 1/2"
PANELS
 6

MULTICAM



6277
FLEXFIT® WOOLY COMBED





FLEXFIT
EUROPE - MIDDLE EAST - INDIA

COMPOSITION: SIZES:

63% Polyester XS (6 5/8" - 7 1/8") **ONLY AVAILABLE COLORS MARKED ****
 34% Cotton S/M (6 3/4" - 7 1/4")
 3% Spandex L/LX (7 1/8" - 5 5/8") **ONLY AVAILABLE COLORS MARKED ***

PROFILE **VISOR** **CROWN** **PANELS**
 Mid Permacurv® 3 1/2" 6

6277

FLEXFIT® WOOLY COMBED

Athletic Shape. Hard Buckram. Tonal undervisor.
 Look and feel of wool. 8 rows of stitching on visor.



DARK GREY



SILVER



GREY



BLACK*



NAVY*



FRESH GREEN



GOLD



ROYAL



WHITE



MAROON



RED



ORANGE



BROWN



CAROLINA BLUE



PINK**



KHAKI

FLEXFIT CAP

6511
FLEXFIT® TRUCKER MESH





FLEXFIT
EUROPE - MIDDLE EAST - INDIA

COMPOSITION: 55% Polyester
43% Cotton
2% PU Spandex

SIZES: S/M (6 3/4" - 7 1/4")

| PROFILE | VISOR | CROWN | PANELS |
|---------|------------|--------|--------|
| Mid | Permacurv® | 3 1/2" | 6 |

6511 FLEXFIT®TRUCKER MESH

Innovative elastic trucker mesh for ultimate comfort. 6-panel structured cap with silver undervisor. Flexfit® fitted cap for style and comfort. 8 rows of stitching on visor. FLEXFIT THE ONE AND ONLY ORIGINAL®



BLACK



NAVY



WHITE



SPRUCE

FLEXFIT CAP

6577CD
FLEXFIT® COOL & PIQUÉ MESH





COMPOSITION: 99% Polyester
1% Spandex

SIZES: S/M (6 3/4" - 7 1/4")
L/LX (7 1/8" - 5 5/8") ONLY AVAILABLE COLORS MARKED *

| PROFILE | VISOR | CROWN | PANELS |
|---------|--------|--------|--------|
| Mid | Curved | 3 1/2" | 6 |

6577CD FLEXFIT® COOL & PIQUÉ MESH

Lightweight. Quick Drying. Moisture wicking. Piqué weave.
Hard Buckrum. Silver undervisor. 8 rows of stitching on visor.



NAVY*



RED



BLACK*



ROYAL



SILVER



WHITE*

FLEXFIT
EUROPE - MIDDLE EAST - INDIA

FLEXFIT PERFORMANCE

5003
FLEXFIT®BUCKET HAT





FLEXFIT
EUROPE - MIDDLE EAST - INDIA

COMPOSITION: 98% Cotton
2% Elastane

SIZES: OSFA

| PROFILE | VISOR | CROWN | PANELS |
|---------|-------|-------|--------|
| Mid | Soft | 3" | 3 |

5003 FLEXFIT® BUCKET HAT

Flexfit® Bucket Hat is integrated with elastane woven fabric throughout entire crown for a perfect and comfortable fit.



BLACK



KHAKI



WHITE



NAVY

FLEXFIT BUCKET HAT



110P
FLEXFIT 110® COOL & DRY MINI PIQUE



COMPOSITION: 100% Polyester
SIZES: OSFA

| PROFILE | VISOR | CROWN | PANELS |
|---------|------------|--------|--------|
| Mid | Permacurv® | 3 1/2" | 6 |

110P FLEXFIT 110® COOL & DRY MINI PIQUE

Lightweight cap with moisture-wicking and water repellent abilities. 6-panel structured cap with matching undervisor. D-ring hook and loop closure with 8 rows of stitching on visor. Adjustable + Flexfit® Technology.



110T
FLEXFIT 110® MESH CAP





COMPOSITION: 56% Polyester
44% Cotton

SIZES: OSFA

| PROFILE | VISOR | CROWN | PANELS |
|---------|------------|--------|--------|
| Mid | Permacurv® | 3 1/2" | 6 |

110T FLEXFIT 110® MESH CAP

Flexfit 110® mesh cap for ultimate comfort and ventilation, a unique combination of Flexfit® tech + adjustable closure for a super comfort fit with moisture wicking sweatband allowing you to stay dry.



BLACK



NAVY



DARK GREY



WHITE

FLEXFIT
EUROPE - MIDDLE EAST - INDIA

FLEXFIT 110 MESH CAP



8110
FLEXFIT 110® VISOR





FLEXFIT
EUROPE - MIDDLE EAST - INDIA - RUSSIA

COMPOSITION: 97% Polyester
3% PU Spandex

SIZES: OSFA

| PROFILE | VISOR | CROWN | PANELS |
|---------|------------|--------|--------|
| Low | Permacurv® | 2 1/2" | 3 |



BLACK



WHITE

8110 FLEXFIT 110® VISOR

Adjustable on the outside, Flexfit® Tech on the inside. Mini pique, Cool & Dry fabric for moisture wicking & quick drying. Elastic flexloop attached to hook & loop closure for unparalleled comfort. Matching undervisor.

FLEXFIT 110



7005
YP CLASSICS® JOCKEY





COMPOSITION: 100% Cotton
SIZES: OSFA

| PROFILE | VISOR | CROWN | PANELS |
|---------|-------|--------|--------|
| Low | Flat | 2 3/4" | 5 |

7005 YP CLASSICS® JOCKEY

Fine tune your sporty look with the camper shape Jockey cap. Classic camper shape. Black clip closure. 4 black, metal eyelets. Soft buckram. Matching undervisor.



BLACK



NAVY

YP CLASSICS® JOCKEY



6089M
YP CLASSICS® SNAPBACK



| | | | |
|---------------------|--------------|---------------|--------------------------------|
| COMPOSITION: | | SIZES: | |
| 80% Acrylic | | OSFA | |
| 20% Wool | | YOUTH | ONLY AVAILABLE COLORS MARKED * |
| PROFILE | VISOR | CROWN | PANELS |
| High | Flat | 3 3/4" | 6 |

6089M YP CLASSICS® SNAPBACK

Classic shape. Premium wool blend. Matching plastic snap.
Hard buckrum. Self coloured undervisor. 8 rows of stitching on visor.



SILVER



NAVY



RED*



ROYAL



HEATHER



BLACK*



WHITE*



FLEXFIT
EUROPE - MIDDLE EAST - INDIA

6789M

YP CLASSICS® CURVED VISOR
SNAPBACK



COMPOSITION: 80% Acrylic
20% Wool

SIZES: OSFA

| PROFILE | VISOR | CROWN | PANELS |
|---------|------------|--------|--------|
| Mid | Permacurv® | 3 1/2" | 6 |

6789M
YP CLASSICS® CURVED VISOR
SNAPBACK

Premium wool blend. Hard Buckrum. Matching plastic snap.
 Silver undervisor. 8 rows of stitching on visor. Matching undervisor.



BLACK



HEATHER GREY



NAVY



FLEXFIT®
 EUROPE - MIDDLE EAST - INDIA



FLEXFIT
EUROPE - MIDDLE EAST - INDIA

COMPOSITION: 60% Cotton
40% Polyester

SIZES: OSFA

| PROFILE | VISOR | CROWN | PANELS |
|---------|-------|--------|--------|
| High | Flat | 3 3/4" | 6 |



CAMO

6089CA YP CLASSICS® CAMO SNAPBACK

High quality woodland camo print. Classic shape. Black plastic snap. Hard buckram. Classic green undervisor. 8 rows of stitching on visor.

YP CLASSICS SNAPBACK

COMPOSITION: 80% Acrylic
20% Wool

SIZES: OSFA

| PROFILE | VISOR | CROWN | PANELS |
|---------|-------|--------|--------|
| High | Flat | 3 3/4" | 5 |



BLACK

5089M

YP CLASSICS® 5 PANEL SNAPBACK

Classic shape. Premium wool blend. Matching plastic snap. Hard buckrum. Self coloured undervisor. 8 rows of stitching on visor.



FLEXFIT
EUROPE - MIDDLE EAST - INDIA



6606
YP CLASSICS® RETRO TRUCKER





FLEXFIT
EUROPE - MIDDLE EAST - INDIA

COMPOSITION: SIZES:

47% Cotton OSFA
28% Nylon
25% Polyester

| PROFILE | VISOR | CROWN | PANELS |
|---------|------------|--------|--------|
| Mid | Permacurv® | 3 1/2" | 6 |

6606

YP CLASSICS® RETRO TRUCKER

Trucker mesh back. Matching plastic snap. Hard buckrum.
Matching undervisor. 8 rows of stitching on visor.



DARK GREY



MAROON



BUCK



SILVER



ROYAL



KHAKI



RED



PINK



NAVY



WHITE



BLACK

YP CLASSICS RETRO TRUCKER

COMPOSITION: 47% Cotton
28% Nylon
25% Polyester

SIZES: OSFA
YOUTH ONLY AVAILABLE COLORS MARKED*

| PROFILE | VISOR | CROWN | PANELS |
|---------|------------|--------|--------|
| Mid | Permacurv® | 3 1/2" | 6 |

6606T YP CLASSICS® 2-TONE RETRO TRUCKER

Trucker mesh back. Matching plastic snap. Hard buckrum. Matching undervisor. 8 rows of stitching on visor.



BLACK/WHITE*



NAVY/WHITE



RED/WHITE*



ROYAL/WHITE



SILVER/WHITE



KHAKI/WHITE



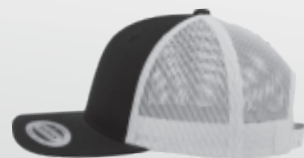
SKY BLUE/WHITE*
AVAILABLE IN YOUTH ONLY



PINK/WHITE*
AVAILABLE IN YOUTH ONLY



CAMO/BLACK



FLEXFIT
EUROPE - MIDDLE EAST - INDIA

6606W

YP CLASSICS® TRUCKER WITH WHITE
FRONT PANEL



COMPOSITION: 65% Polyester
35% Cotton

SIZES: OSFA

| PROFILE | VISOR | CROWN | PANELS |
|---------|------------|--------|--------|
| Mid | Permacurv® | 3 1/2" | 6 |



BLACK/WHITE/BLACK



NAVY/WHITE/NAVY

6606W YP CLASSICS® RETRO TRUCKER WITH WHITE FRONT PANEL

Premium mesh panels for breathability. 6-panel structured trucker with matching undervisor. Matching snapback with 8 rows of stitching on visor. Comes with white front panel. Esteemed since 1974.



FLEXFIT®
EUROPE - MIDDLE EAST - INDIA





FLEXFIT
EUROPE - MIDDLE EAST - INDIA

COMPOSITION: 56% Recycled Polyester
44% Cotton

SIZES: OSFA

| PROFILE | VISOR | CROWN | PANELS |
|---------|------------|--------|--------|
| Mid | Permacurv® | 3 1/2" | 6 |



BLACK

6606R 

YP CLASSICS® RECYCLED RETRO TRUCKER

Trucker mesh back. Matching plastic snap. Hard buckrum.
Matching undervisor. 8 rows of stitching on visor.

YP CLASSICS RETRO TRUCKER

COMPOSITION: 65% Polyester
35% Cotton

SIZES: OSFA

| PROFILE | VISOR | CROWN | PANELS |
|---------|------------|--------|--------|
| Mid | Permacurv® | 3 1/2" | 5 |

6506 YP CLASSICS® 5-PANEL RETRO TRUCKER

Featuring the mesh fabric panels for ultimate breathability, the YP Classics® 5-panel Retro Trucker cap offers the finest style and max breathability. It is designed to boost your activity.



BLACK



CHARCOAL



WHITE



NAVY



FLEXFIT
EUROPE - MIDDLE EAST - INDIA

6006
YP CLASSICS® TRUCKER



COMPOSITION: 47% Cotton
28% Nylon
25% Polyester

SIZES: OSFA

| PROFILE | VISOR | CROWN | PANELS |
|---------|-------|--------|--------|
| High | Flat | 3 1/2" | 5 |

6006 YP CLASSICS® TRUCKER

Ideal for screenprinting & embroidery. Trucker mesh back. Matching plastic snap. Hard buckrum. Matching undervisor. 8 rows of stitching on visor.



NAVY



CHARCOAL



RED



BLACK



WHITE



FLEXFIT®
EUROPE - MIDDLE EAST - INDIA



COMPOSITION: SIZES:

47% Cotton OSFA
28% Nylon
25% Polyester

| PROFILE | VISOR | CROWN | PANELS |
|---------|-------|--------|--------|
| High | Flat | 3 1/2" | 5 |

6006T

YP CLASSICS® 2-TONE TRUCKER

Ideal for screenprinting & embroidery. Trucker mesh back.
Matching plastic snap. Hard buckrum. Matching undervisor.
8 rows of stitching on visor.



NAVY/WHITE



BLACK/WHITE



CHARCOAL/WHITE



RED/BLACK

FLEXFIT
EUROPE - MIDDLE EAST - INDIA

YP CLASSICS TRUCKER



COMPOSITION: 47% Cotton
28% Nylon
25% Polyester

SIZES: OSFA

| PROFILE | VISOR | CROWN | PANELS |
|---------|-------|--------|--------|
| High | Flat | 3 1/2" | 5 |

6006W YP CLASSICS® TRUCKER WITH WHITE FRONT PANEL

Ideal for screenprinting & embroidery. Trucker mesh back.
Matching plastic snap. Hard buckrum. Matching undervisor.
8 rows of stitching on visor.



BLACK/WHITE/BLACK



RED/WHITE/RED



NAVY/WHITE/NAVY



C.BLUE/WHITE/C.BLUE



ROYAL/WHITE/ROYAL





6245CM UNSTRUCTURED
YUPOONG® DAD CAP





FLEXFIT
EUROPE - MIDDLE EAST - INDIA

COMPOSITION: 100% Cotton
SIZES: OSFA

| PROFILE | VISOR | CROWN | PANELS |
|---------|------------|--------|--------|
| Low | Permacurv® | 3 1/8" | 6 |

6245CM UNSTRUCTURED YUPOONG® DAD CAP

Extra low profile. Antique brass buckle closure. Matching undervisor. Unstructured for classic, elegant style. 4 rows of stitching on visor.



BLACK



NAVY



KHAKI



WHITE



PINK

YUPOONG ADJUSTABLE DAD CAP

6363B
YUPOONG® MID PROFILE



COMPOSITION: 60% Cotton
40% Polyester

SIZES: OSFA

| PROFILE | VISOR | CROWN | PANELS |
|---------|------------|--------|--------|
| Mid | Permacurv® | 3 1/2" | 6 |

6363B YUPOONG® MID PROFILE

Medium buckram. Matching hook & loop closure. Tonal undervisor.
8 rows of stitching on visor.



GREY



KHAKI



NAVY



ROYAL



RED



BLACK



WHITE



FLEXFIT®
EUROPE - MIDDLE EAST - INDIA





FLEXFIT
EUROPE - MIDDLE EAST - INDIA

COMPOSITION: 98% Organic Cotton
2% PU Spandex

SIZES: OSFA

| PROFILE | VISOR | CROWN | PANELS |
|---------|------------|--------|--------|
| Low | Permacurv® | 2 3/4" | 5 |

6363OEM  **YUPOONG® ORGANIC COTTON**

Flexfit® has followed the general trend and produced one of its classics in pure organic cotton.



DARK GREY



RED



PURPLISH NAVY



BURNT OLIVE



WHITE



BLACK

YUPOONG ORGANIC COTTON

FLEXFIT® DISPLAY STAND



CUSTOM OVERSEAS PROGRAM

For over 44 years, Flexfit - Yupoong has focused on innovation, technology and service to become the world's premier headwear manufacturer. The private label possibilities are endless with a myriad of styles, including Flexfit, fitteds, adjustables, snapbacks, camo caps, bucket hats and much more. We even have comprehensive services that include in-house design assistance, information on the latest trends, endless embellishment techniques, fabrics and much more.

ACTIVE BRAND PARTNERS

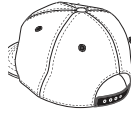
Nike, Adidas, Reebok, Puma, Starter Black Label, Mitchell & Ness, Jordan Brand, Stussy, Obey, Brixton, HUF, Undeclared, The Hundreds, Hall of Fame, 10 Deep, LRG, VANS, Hurley, RVCA, DC Shoes, Quiksilver, Billabong, Volcom, Alpinestars, Fox Racing, The North Face, Columbia, Arc'teryx, Burton, Oakley, Under Armour, Patagonia, Kangol, Ping, Polo Ralph Lauren, FUBU, Rocawear, Mercedes Benz and much more.



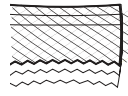
FITS



VISORS



BACK CLOSURES



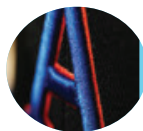
FABRICS



SWEATBANDS



LEATHER



EMBROIDERY



PATCHES & LABELS



PRINTS



FABRIC

MINIMUMS:
576 pieces per style

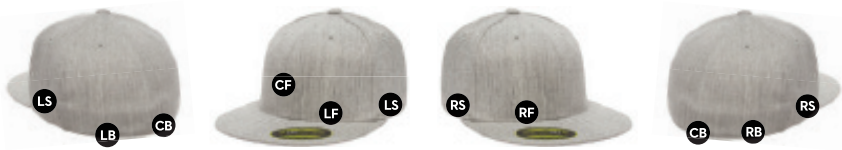
LEAD TIME:
PROTOTYPE SAMPLE: 2-3 weeks SALES MEN SAMPLE: 3-4 weeks
BULK PRODUCTION: 8-12 weeks *Lead times are subject to change

EMAIL:
sales@flexfit-headwear.com
www.flexfit-headwear.ae/custom-program

CUSTOM DOMESTIC PROGRAM

But what if you need a job done fast with a limited run? Even with considerably shorter lead times and lower minimums, our domestic program will meet your updated specifications. Select styles from this catalogue and will then brand the caps locally with the design of your choice. The available embellishment techniques are flat embroidery, 3D embroidery and screenprinting.

DOMESTIC PROGRAM LOGO PLACEMENT OPTIONS



LF= Left Front
 LS= Left Side
 LB= Left Back
 CF= Center Front
 CB= Center Back
 RF= Right Front
 RS= Right Side
 RB= Right Back

BRANDING EXAMPLES



MINIMUMS:
 24 pieces per style / color

LEAD TIME:
 PROTOTYPE SAMPLE: 10-12 workdays
 BULK PRODUCTION: 14-18 workdays
 *Lead times are subject to change

EMAIL:
 deprogram@flexfit-headwear.com
 www.flexfit-headwear.ae/custom-program



FLEXFIT[®]

EUROPE - MIDDLE EAST - INDIA